

OZZ XB1 SERIES

TRALERT® PRODUCT LEAFLET





COMPACT SIZE

Experience the power and style of the OZZ XB1 P9" & P20" dynamic LED light bars, designed to perfectly complement modern trucks and other vehicles. These light bars feature a unique dynamic startup function for the position light, available in white and amber, giving your vehicle a contemporary and stylish look.

The OZZ XB1 P9" dynamic LED light bar combines technological innovation with a compact and functional design. Despite its small size, this light bar is equipped with six Osram P9 LEDs, delivering an impressive light output of 4960 lumens. This provides a bright light up to 315 meters away with 1 lux.

OPTIMAL VISIBILITY

With an impressive light output of 11,200 lumens for the P20" variant, the OZZ XB1 Series provides a wide and bright light pattern that illuminates up to 590 meters, making it ideal for driving in dark conditions.

The OZZ XB1 Series offers a choice between the P20" and P9" LED light bars, depending on your lighting needs. Both variants are available with or without dynamic position lights in white or amber. This option not only adds a modern look but also enhances the visibility and safety of your vehicle. Whether you choose the larger P20" or the more compact P9", the OZZ XB1 Series delivers powerful performance in every size.





The OZZ XB1 Series is an advanced range of dynamic LED light bars, designed for modern vehicles that value both style and functionality. With optional dynamic position lights in white or amber, the XB1 Series light bars add a contemporary look to your vehicle while enhancing visibility and safety.

Constructed from durable materials such as stainless steel, aluminum, and polycarbonate, the XB1 Series is built to withstand the toughest conditions. Whether you choose the larger P20" or the more compact P9", the OZZ XB1 Series delivers impressive light output and versatile mounting options, making them the ideal choice for any demanding driver.

Certificates & warranty:

- ECECER7R10
- R7R112R148IP672Y

Included as standard:

- 100 cm cable with Deutsch connector
- Mounting brackets
- Additional mounting hardware

Sealed Deutsch-connector:



General product features OZZ XB1 Series

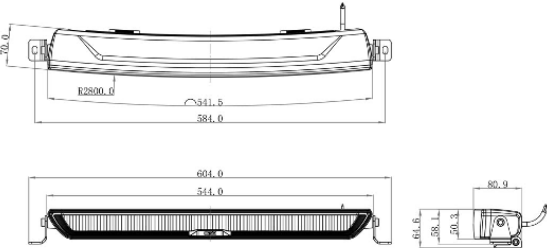
Connector:	Deutsch-connector	Mounting:	Incl. mounting brackets
Beam pattern:	Driving beam	Lens material:	Polycarbonate
Voltage:	10-32V	Housing material:	Gegoten aluminium (ADC12)
IP rating:	IP67	Housing color:	Black
Cable length:	100cm	EMC suppression:	ECE-R10
Daytime running light color:	White / amber	Certifications:	ECE-R10 / ECE-R7 / ECE-R112 / ECE-R148
High beam color temperature:	5000K (white)	Warranty:	2 jaar

OZZ XB1 P20" (Art. 88201)

Features

Dimensions:	544 x 80,9 x 50,3mm
Lumen:	11.200 lumen
Wattage:	120W
Power consumption:	12V - 8,62A / 24v - 4,31A
Light range:	15 lux at 155m / 1 lux at 590m
Position light:	Dynamic, white / amber
Reference number:	50

Dimensions 88201

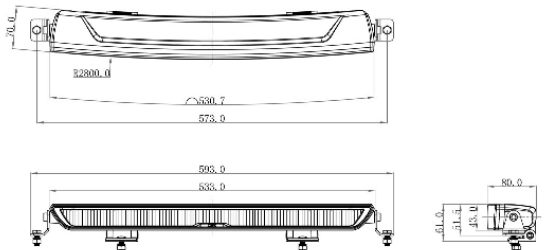


OZZ XB1 P20" excl. position light (Art. 88202)

Features

Dimensions:	533 x 80 x 43mm
Lumen:	11.200 lumen
Wattage:	120W
Power consumption:	12V - 8,62A / 24V - 4,31A
Light range:	15 lux at 155m / 1 lux at 590m
Position light:	/
Reference number:	50

Dimensions 88202

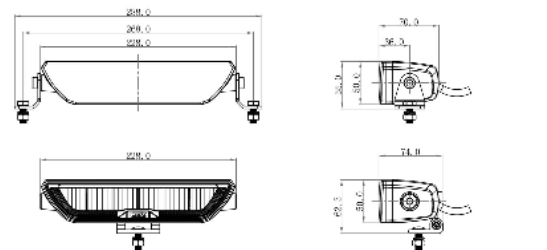


OZZ XB1 P9" (Art. 88203)

Features

Dimensions:	228 x 70 x 50mm
Lumen:	4.960 lumen
Wattage:	60W
Position light:	Dynamic, white / amber
Reference number:	27,5

Dimensions 88203

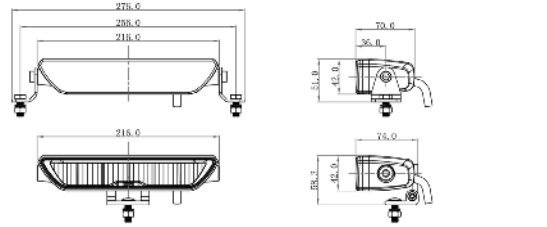


OZZ XB1 P9" excl. position light (Art. 88204)

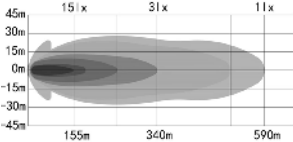
Features

Dimensions:	216 x 70 x 2mm
Lumen:	4.960 lumen
Wattage:	60W
Position light:	/
Reference number:	27,5

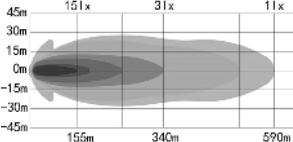
Dimensions 88204



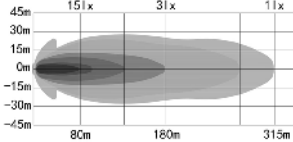
Beam pattern 88201



Beam pattern 88202



Beam pattern 88203



Beam pattern 88204

